

I need to stay home and call the

Employee Illness Line at 701-741-9646 if...



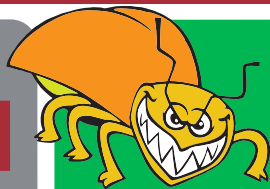
I have a
FEVER

Temperature
of 100°F
or higher



I have a
BODY RASH

Body rash
or open
areas on
my skin



I have
**HEAD LICE
OR BED BUGS**

Itchy head,
head lice, or bed bugs

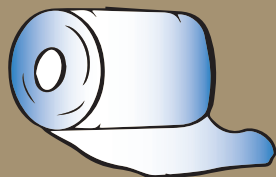
I have
signs and
symptoms of

**RESPIRATORY
ILLNESS**

Cough, congestion,
runny nose,
sore throat,
muscle/body aches,
headache, fatigue,
or have tested positive at
home for COVID-19



I have signs
and symptoms of
GI ILLNESS



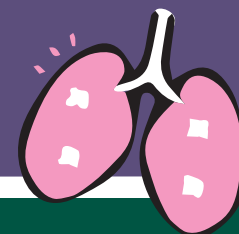
Nausea, vomiting,
and/or diarrhea within
the past 48 hours



I have an
**EYE
INFECTION**

Redness, itching, and/or
crusty drainage from eye

I have had
**CLOSE
CONTACT
WITH
COVID-19**



I am ready to come back to work when I am
cleared by the Employee Illness Line